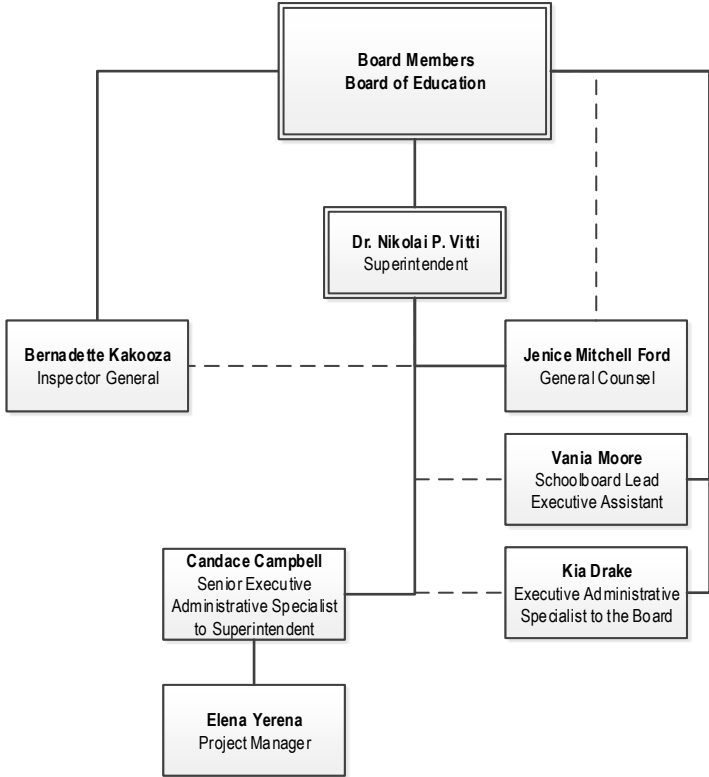




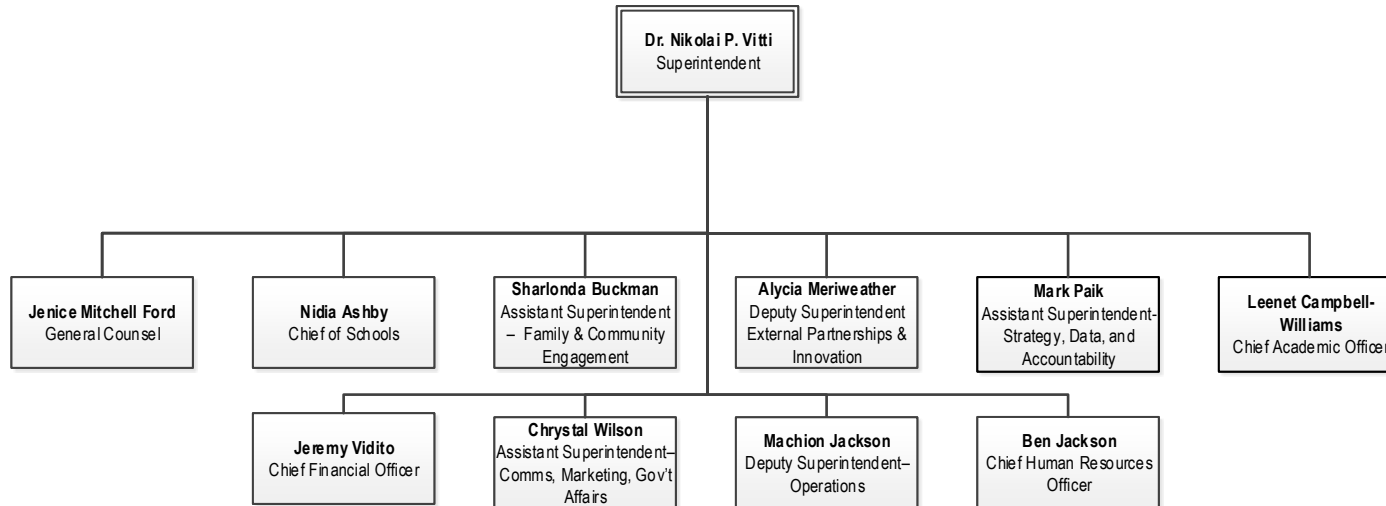
2025-2026

Central Office Organizational Charts

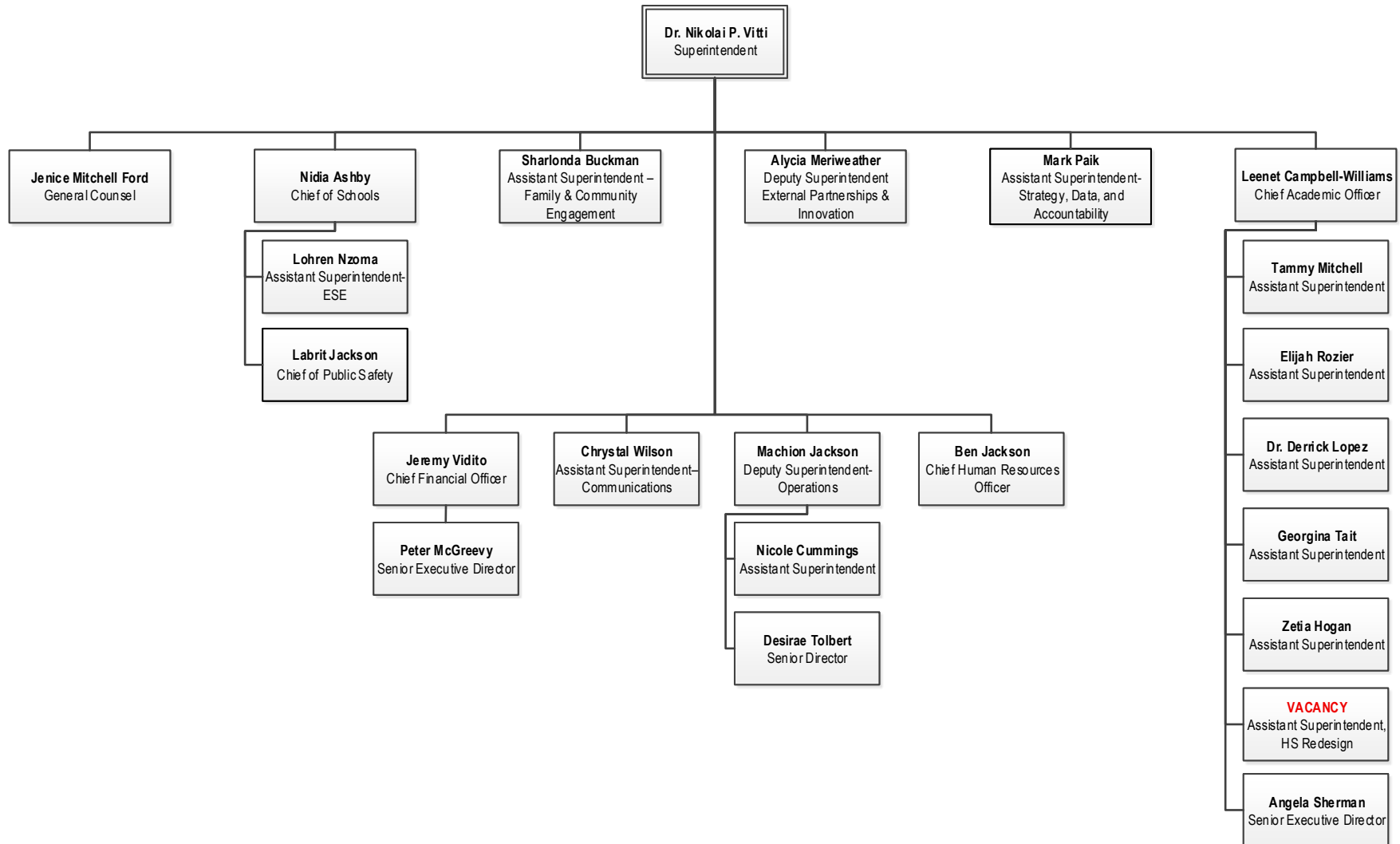
Board of Education and Office of the Superintendent



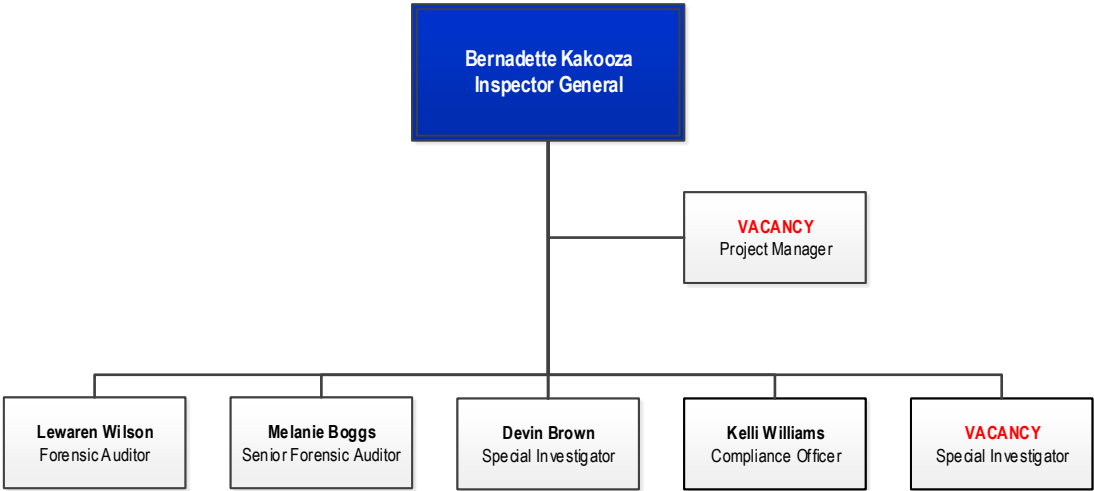
Superintendent's Cabinet



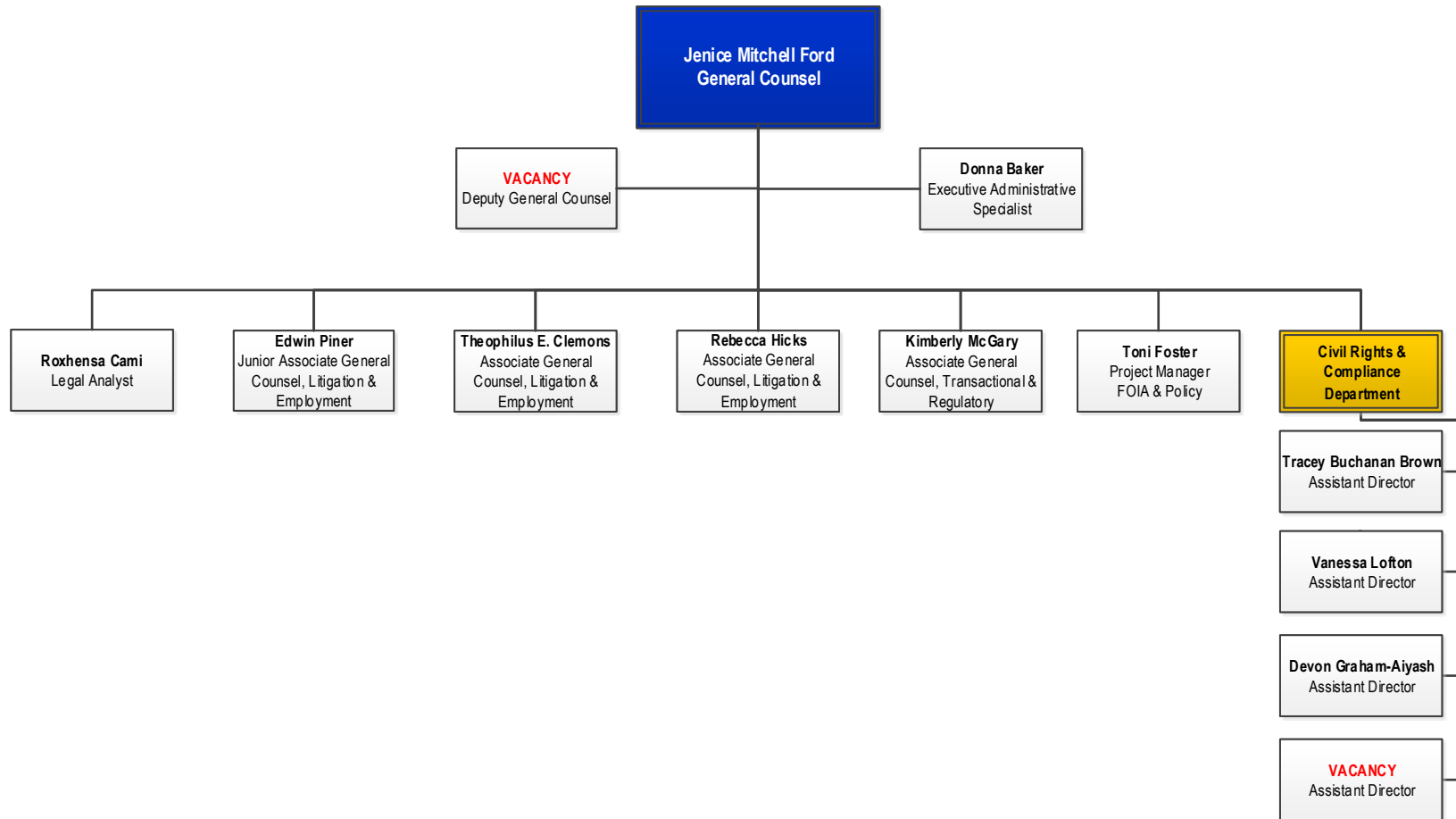
Superintendent's Senior Staff



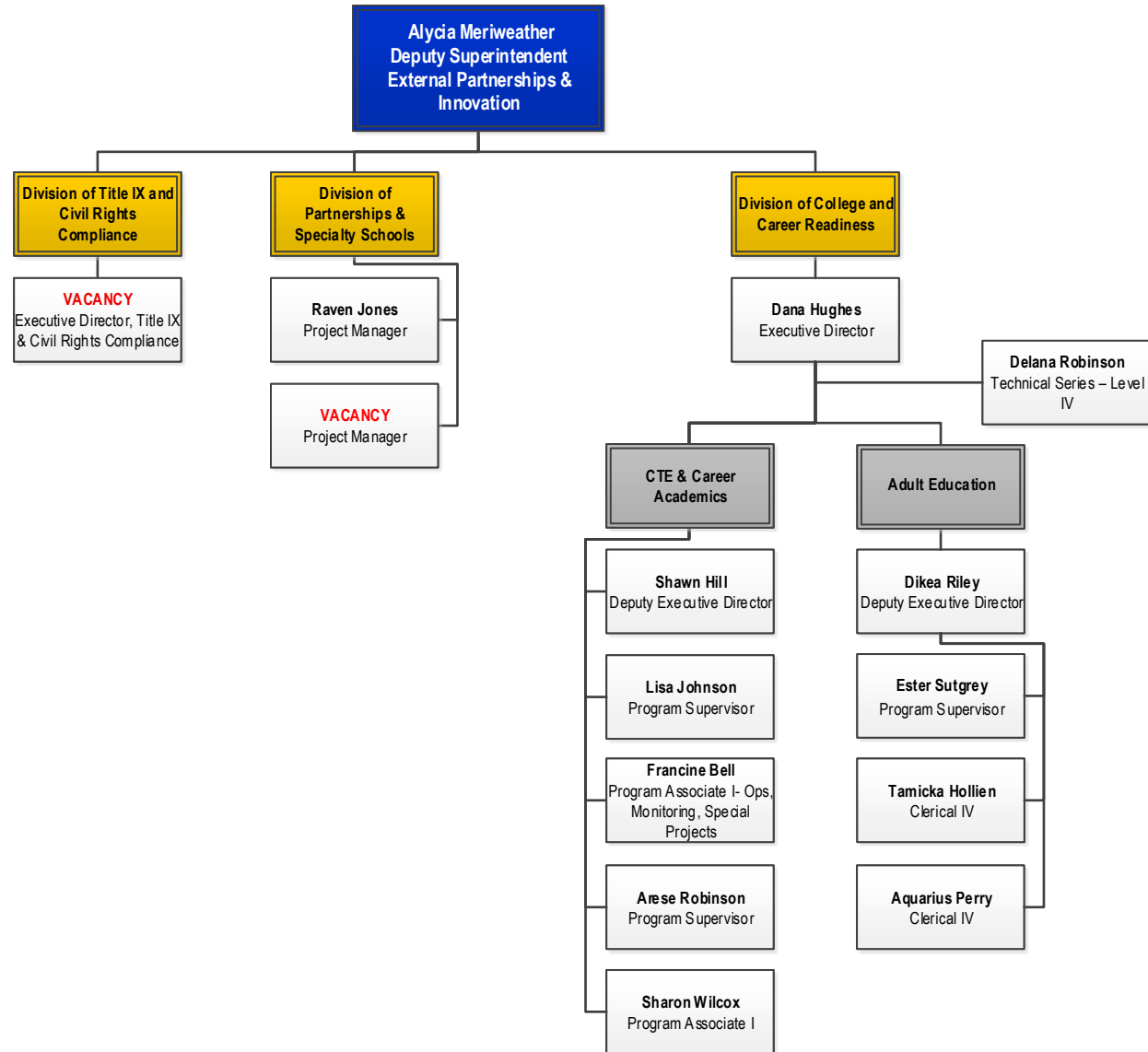
Office of Inspector General



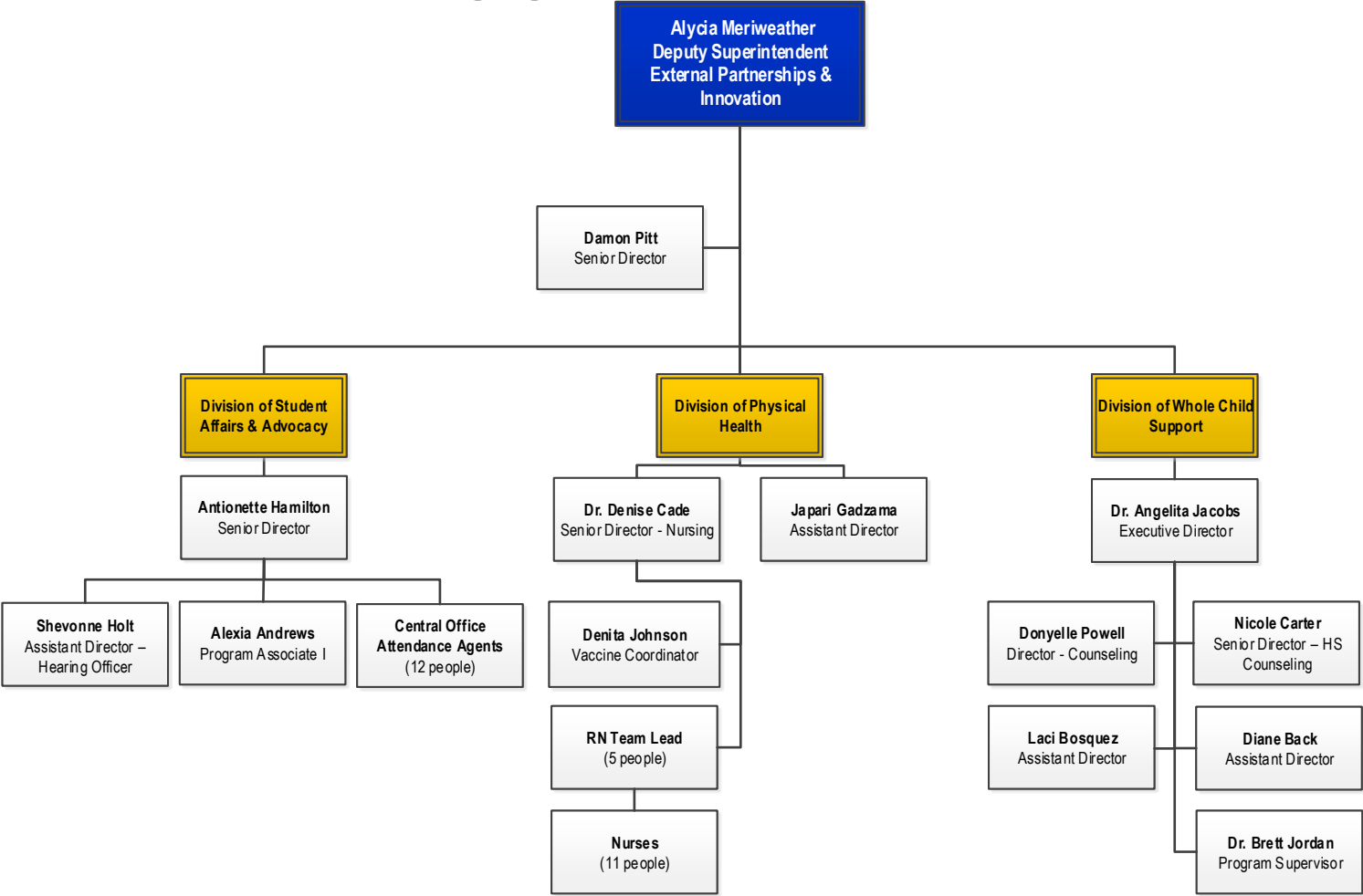
Office of General Counsel



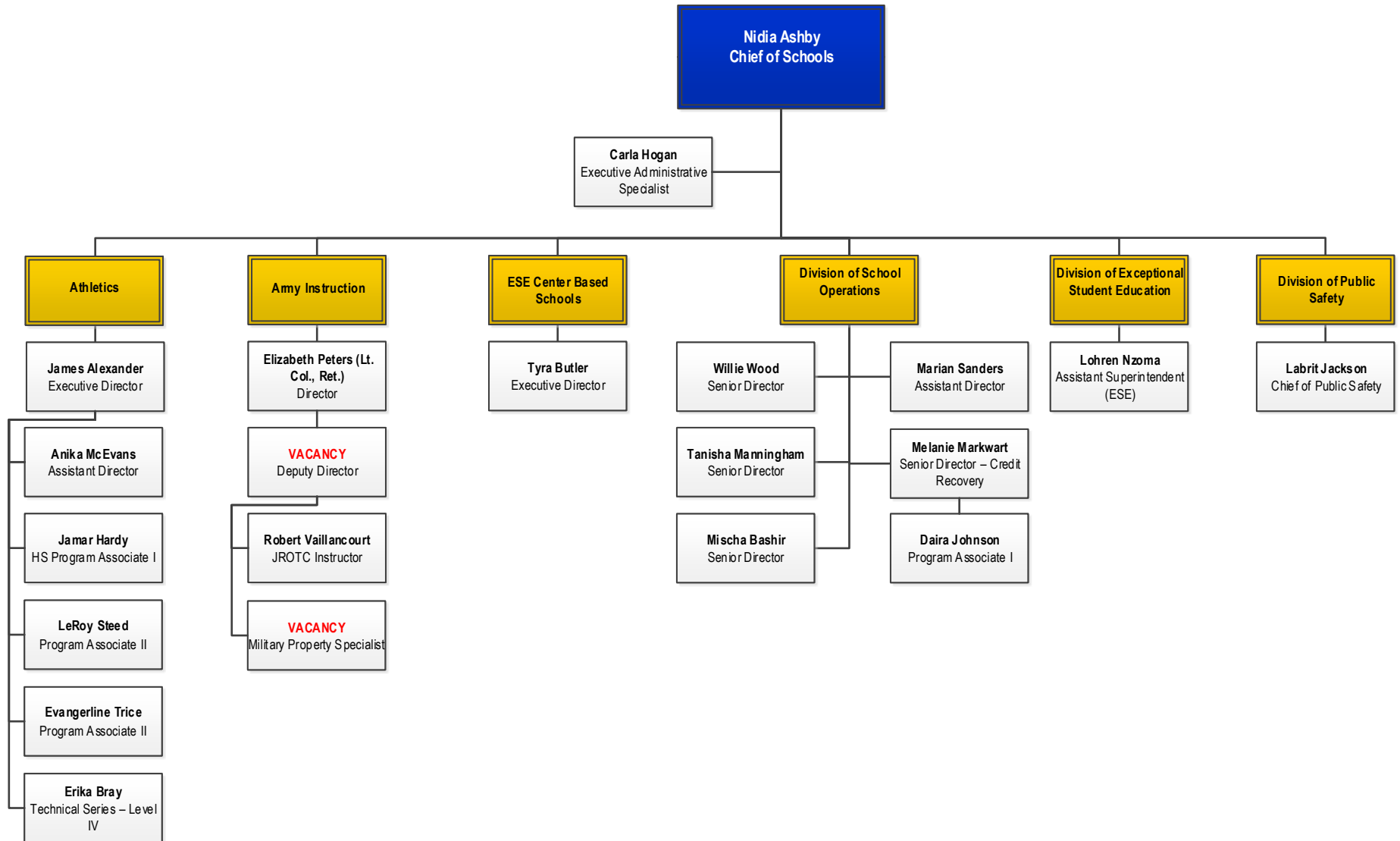
Office of Partnerships, Innovation and Whole Child Support



Office of Partnerships, Innovation and Whole Child Support

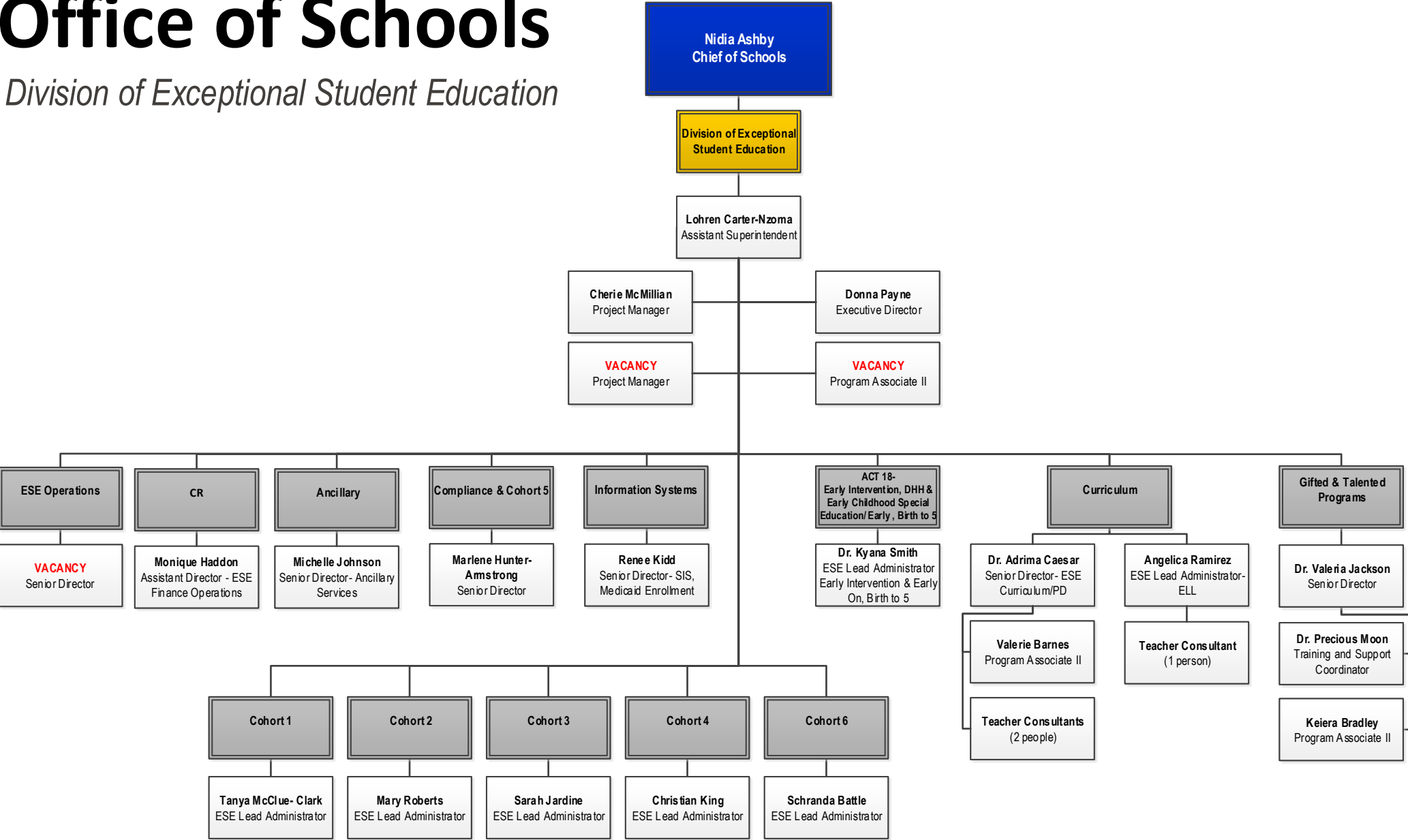


Office of Schools



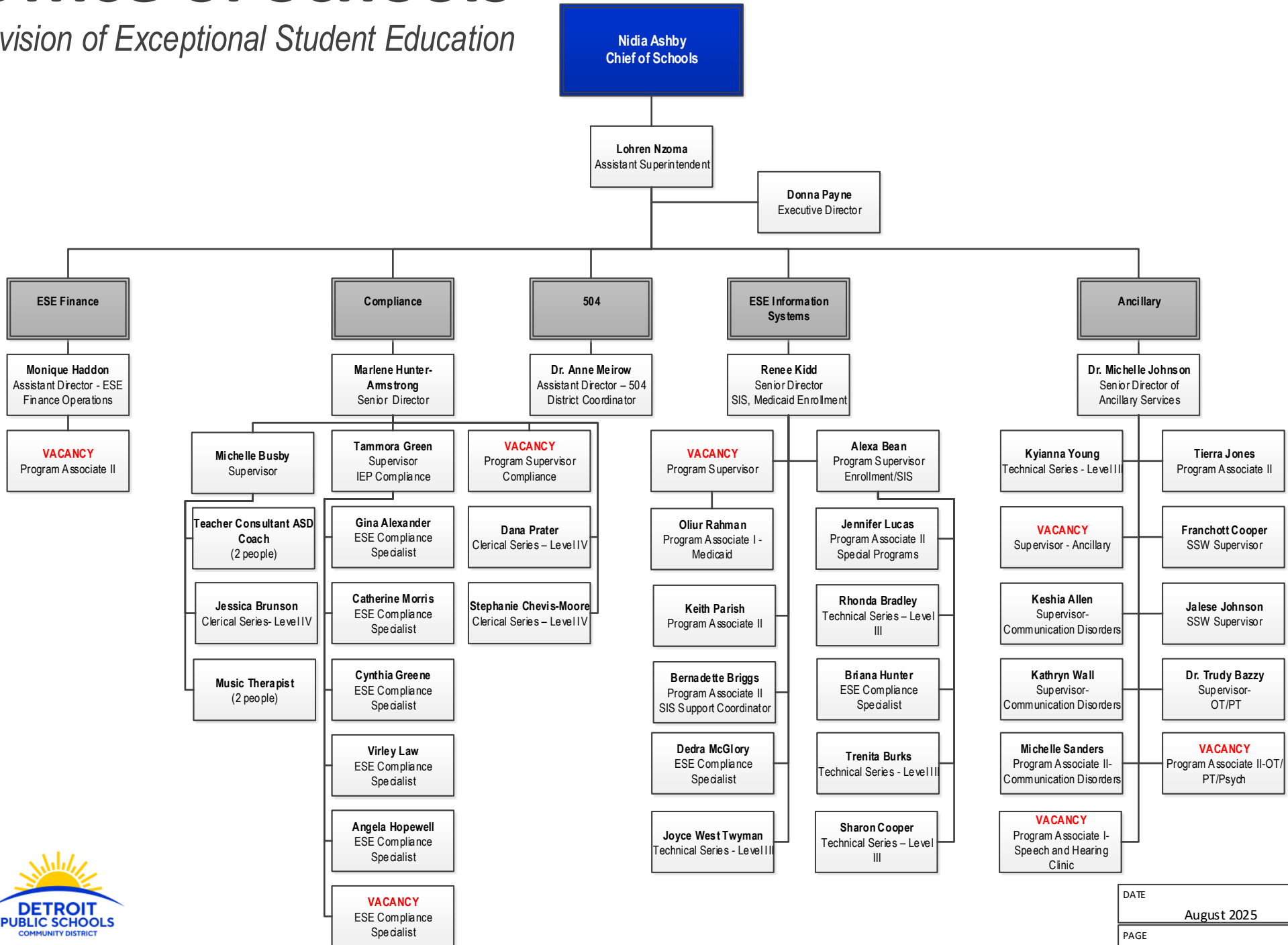
Office of Schools

Division of Exceptional Student Education



Office of Schools

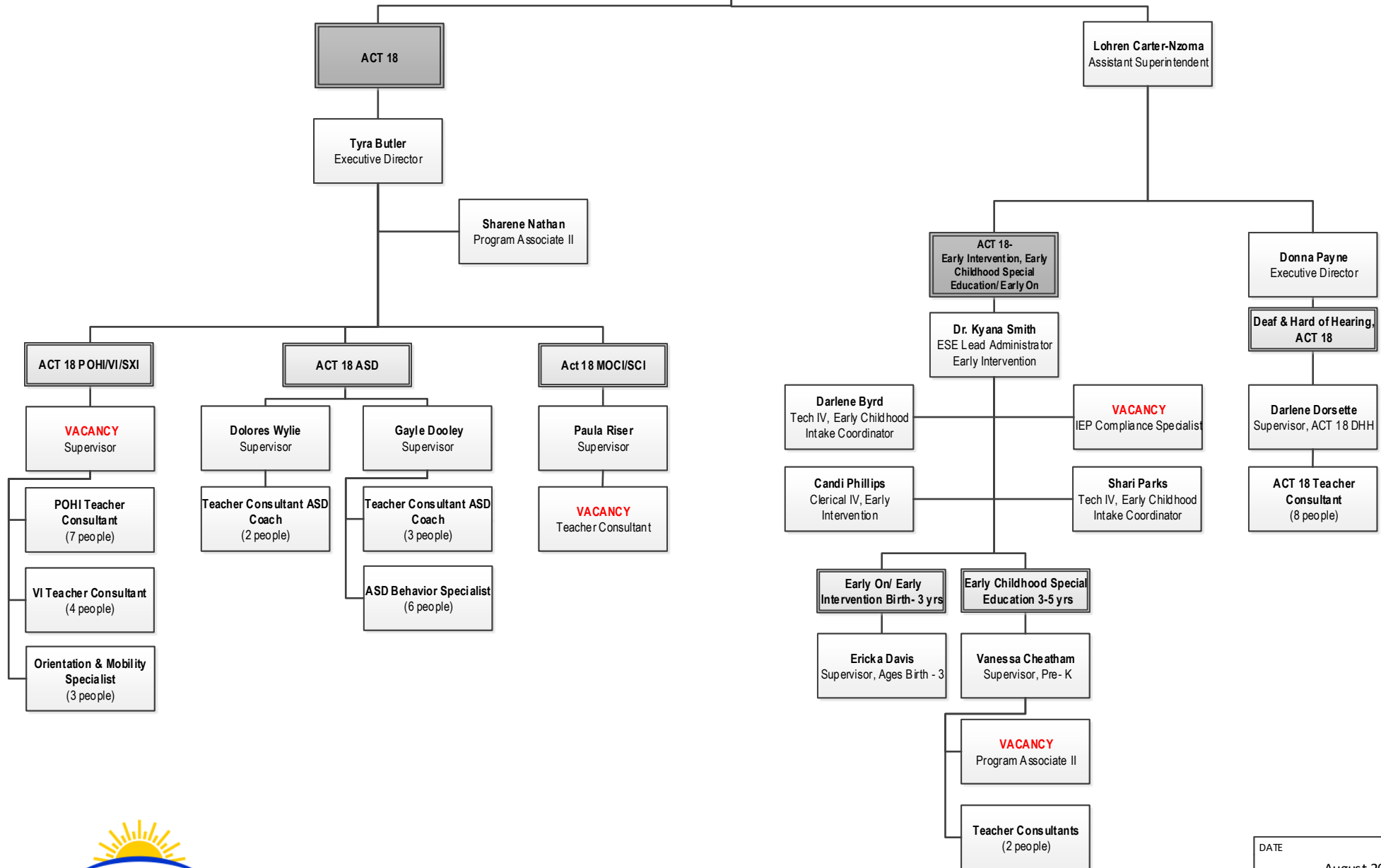
Division of Exceptional Student Education



Office of Schools

Division of Exceptional Student Education

Nidia Ashby
Chief of Schools

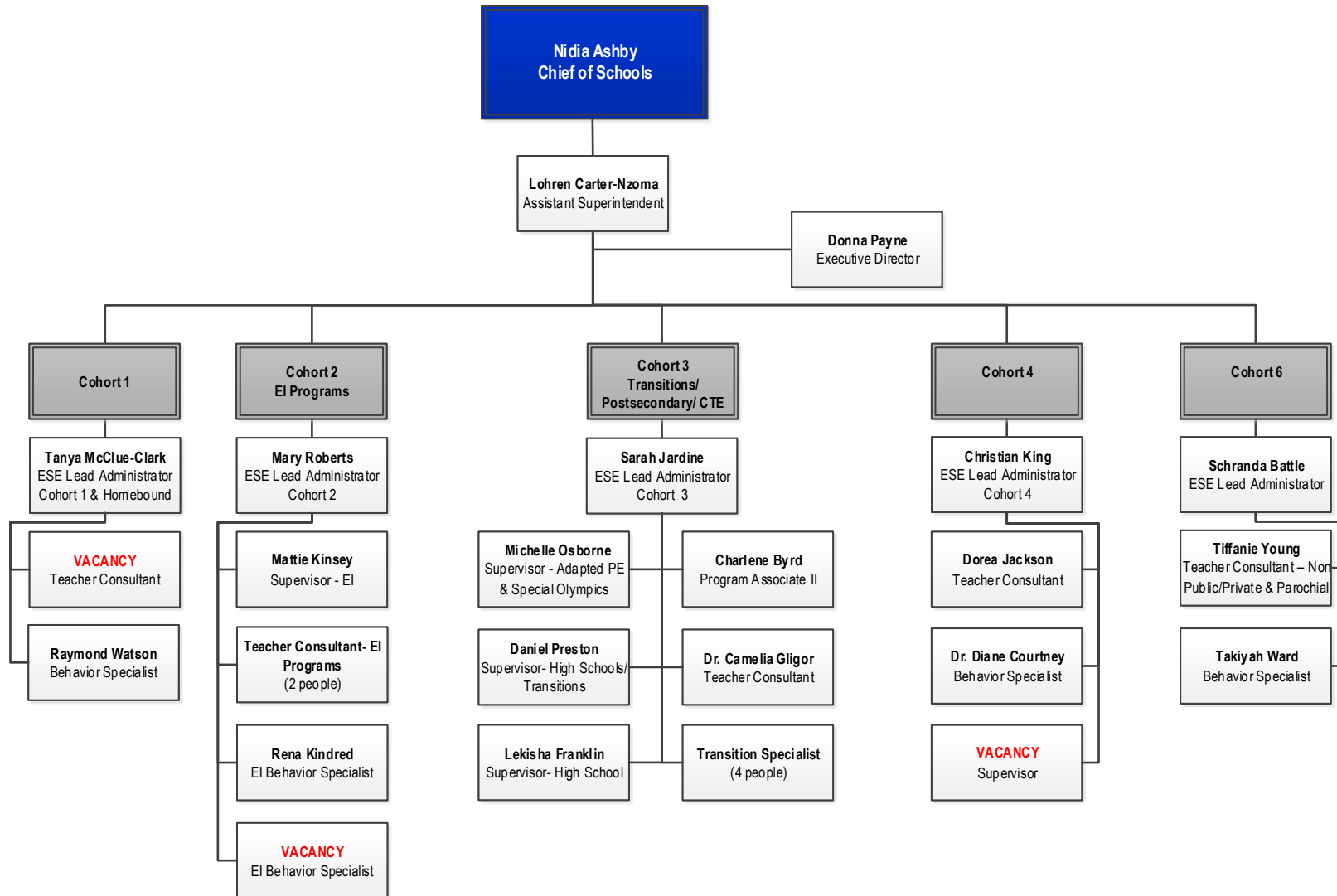


DATE
August 2025

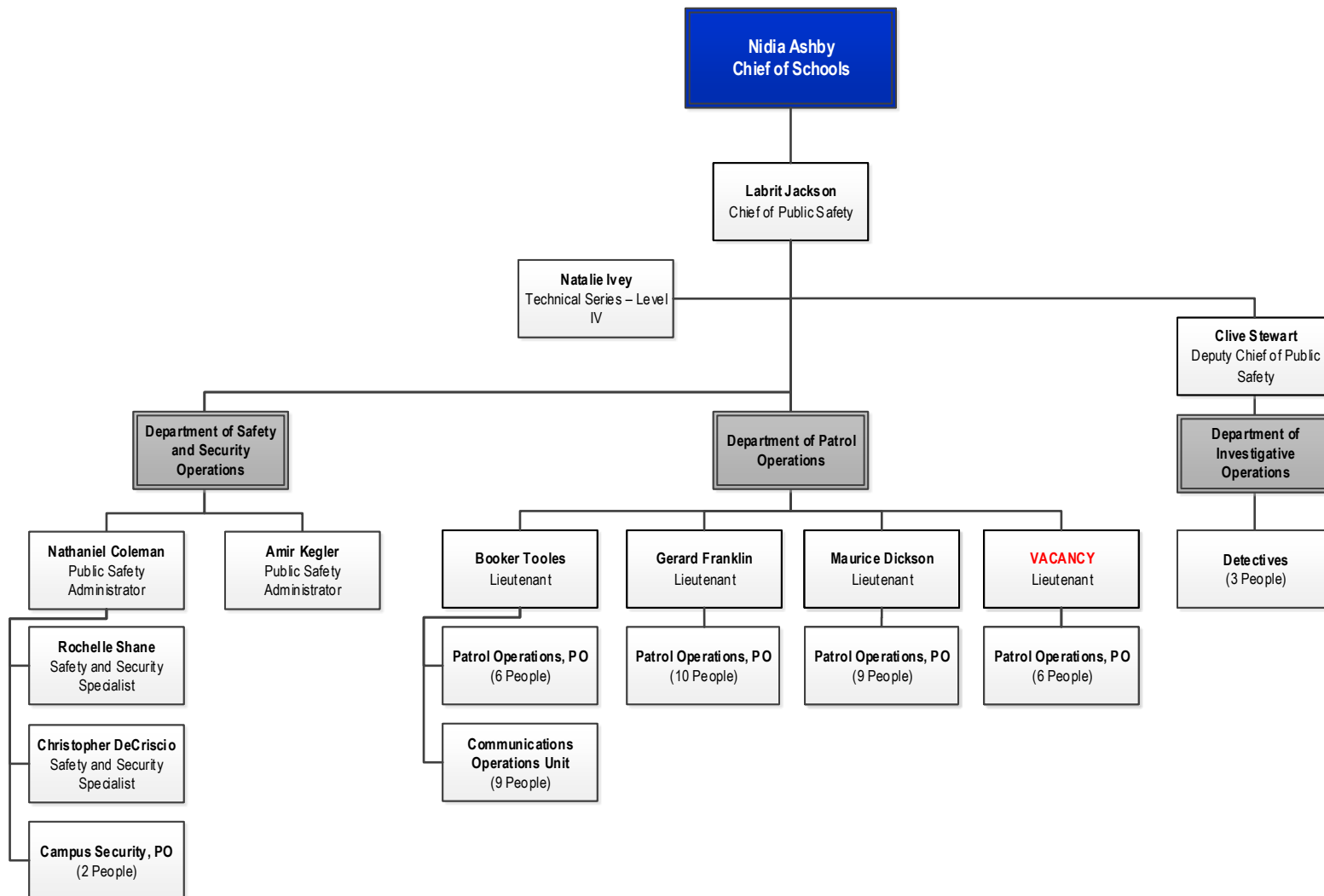
PAGE
12 OF 31

Office of Schools

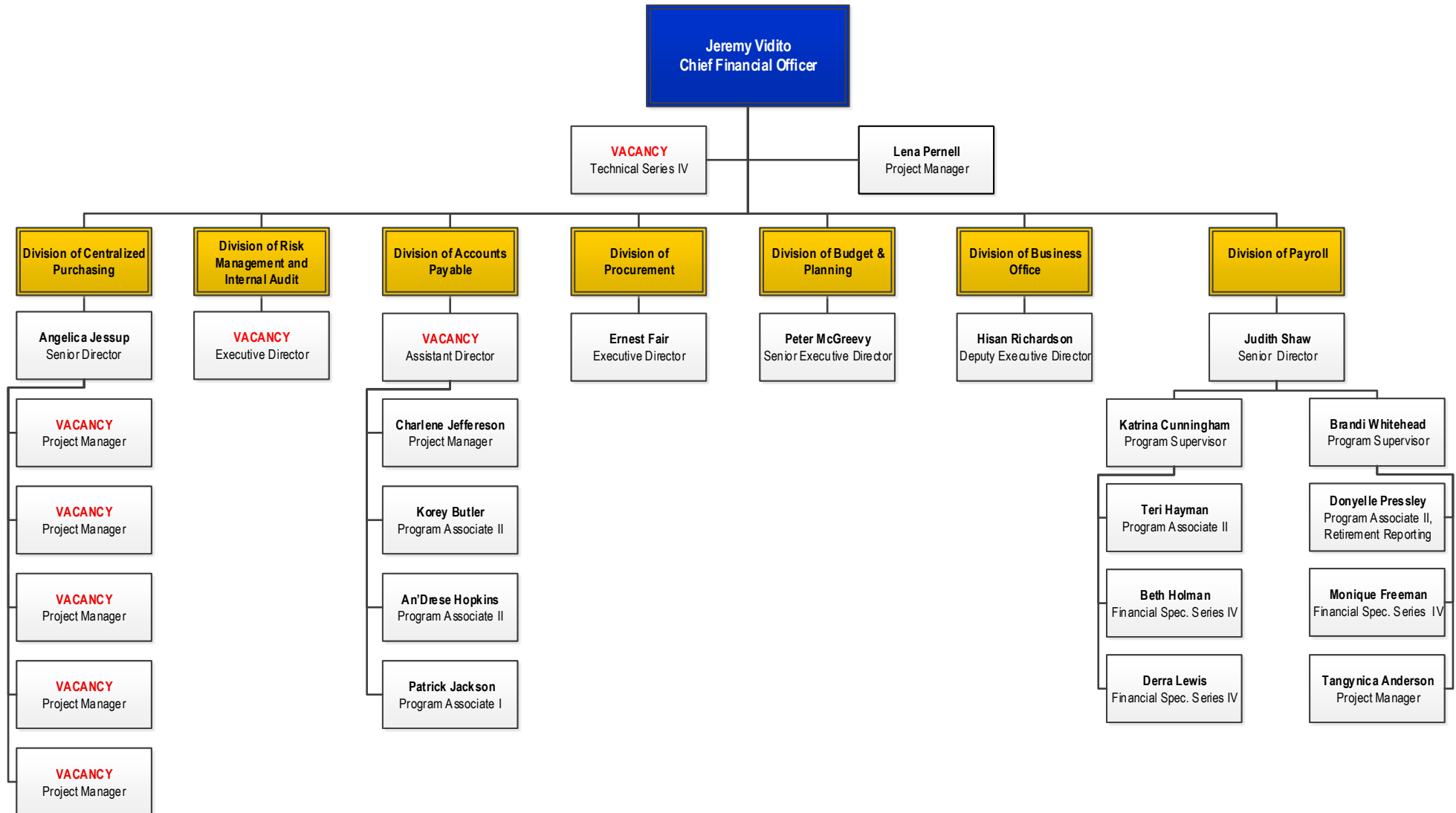
Division of Exceptional Student Education



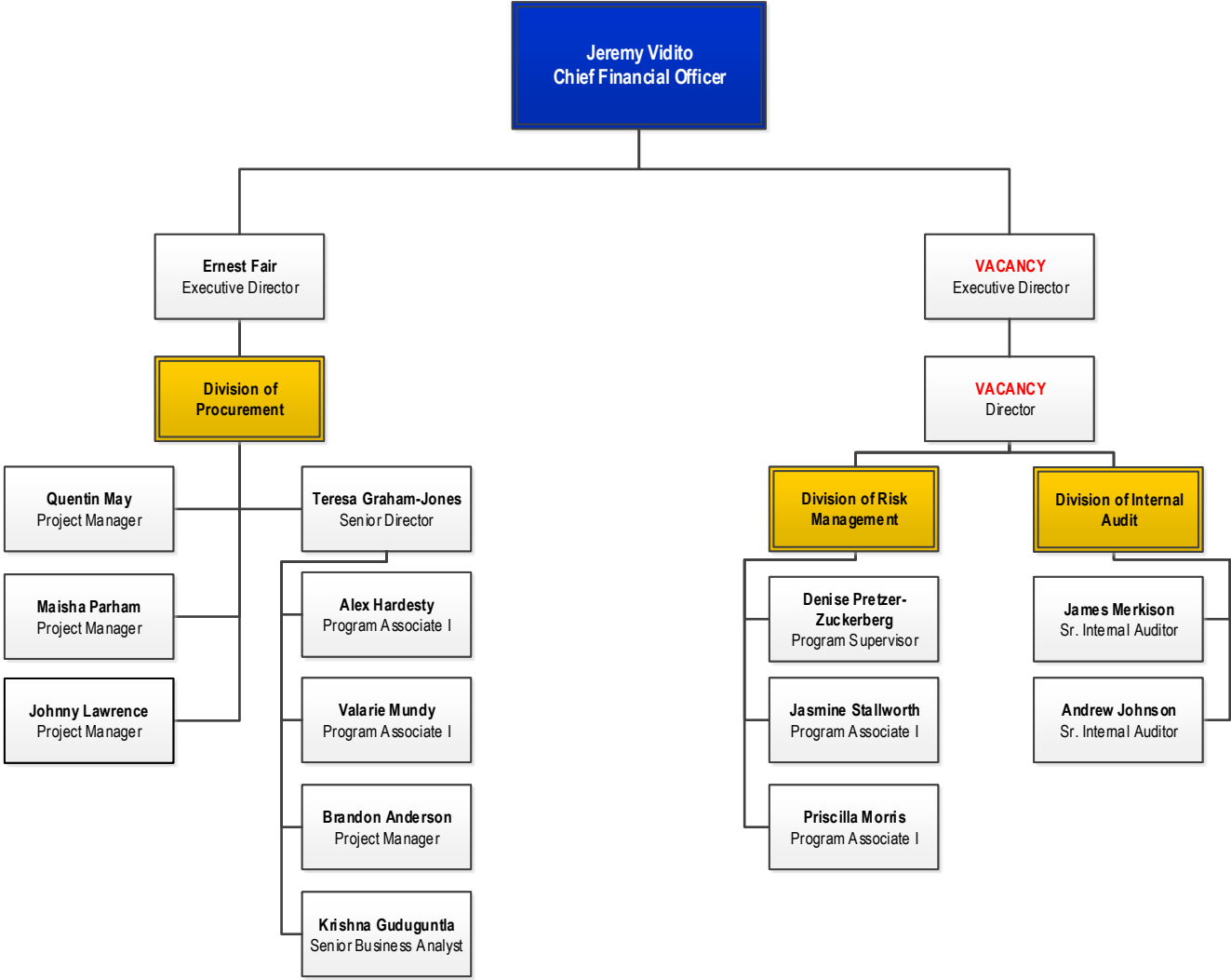
Office of Public Safety



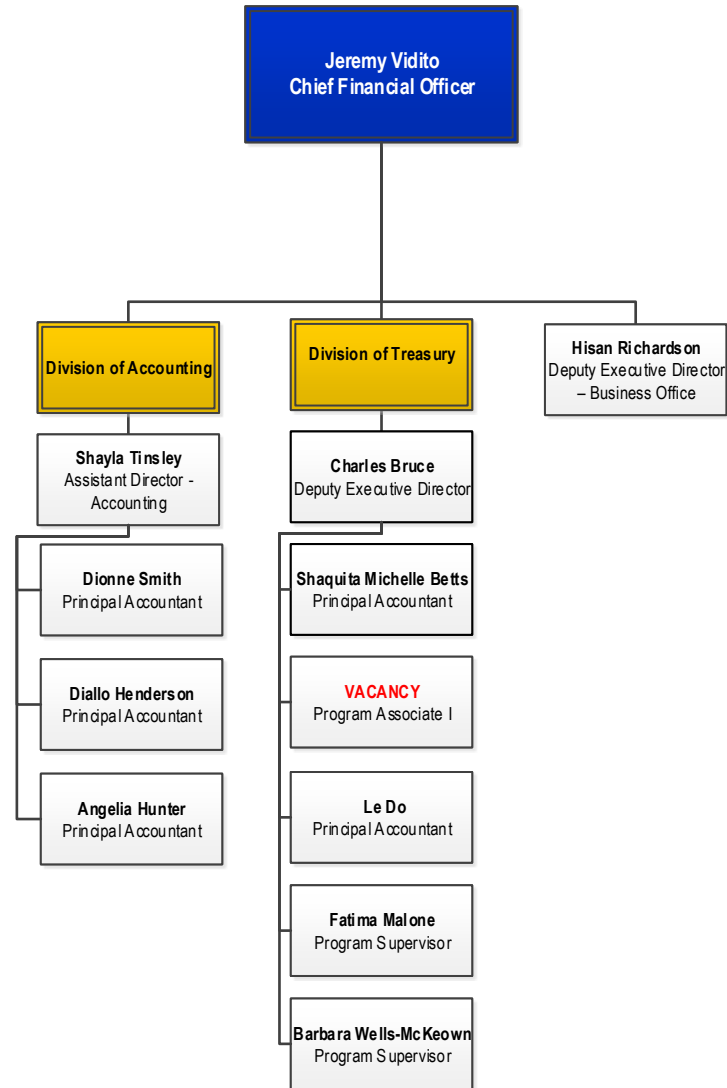
Office of Finance



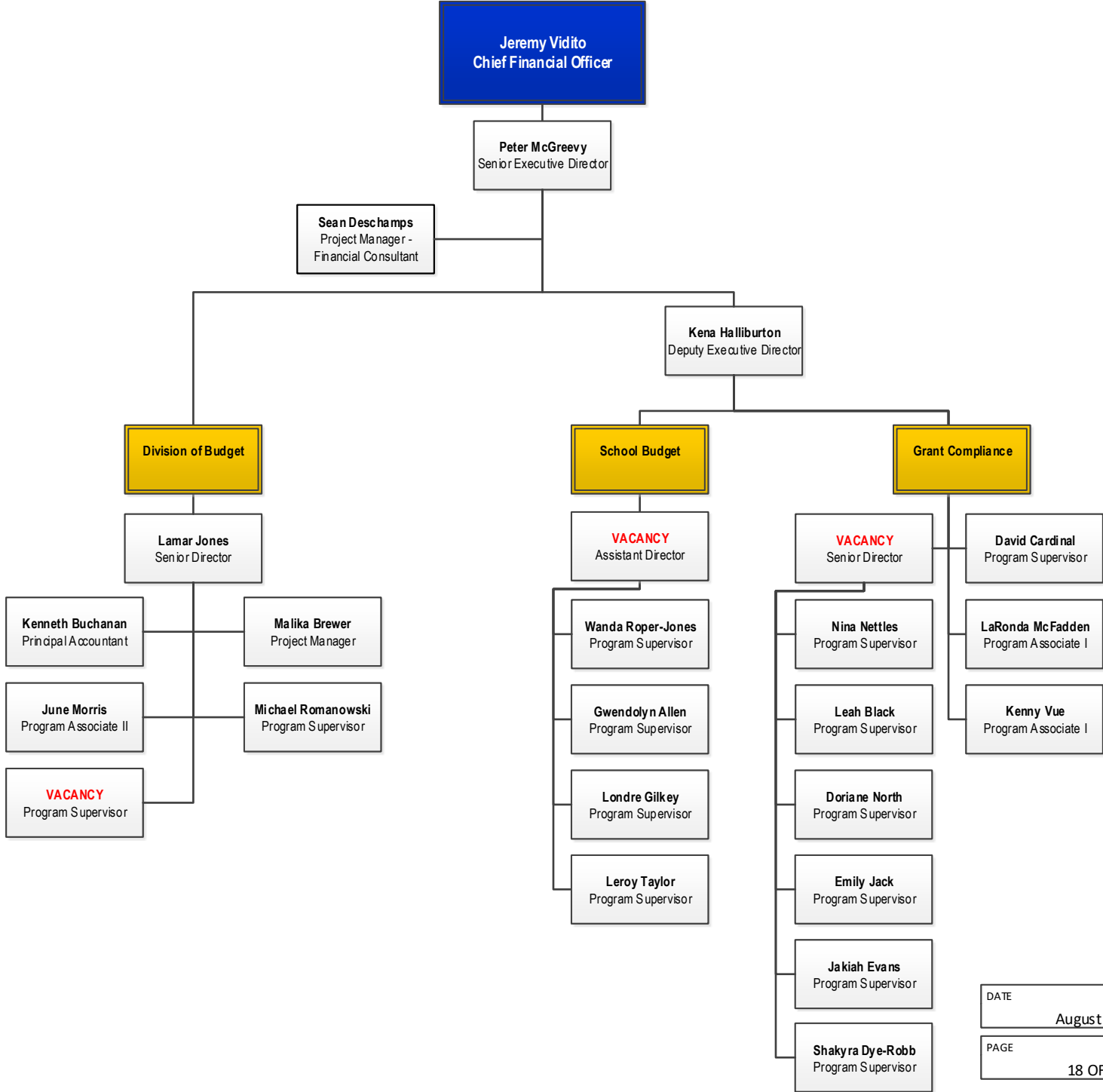
Office of Finance



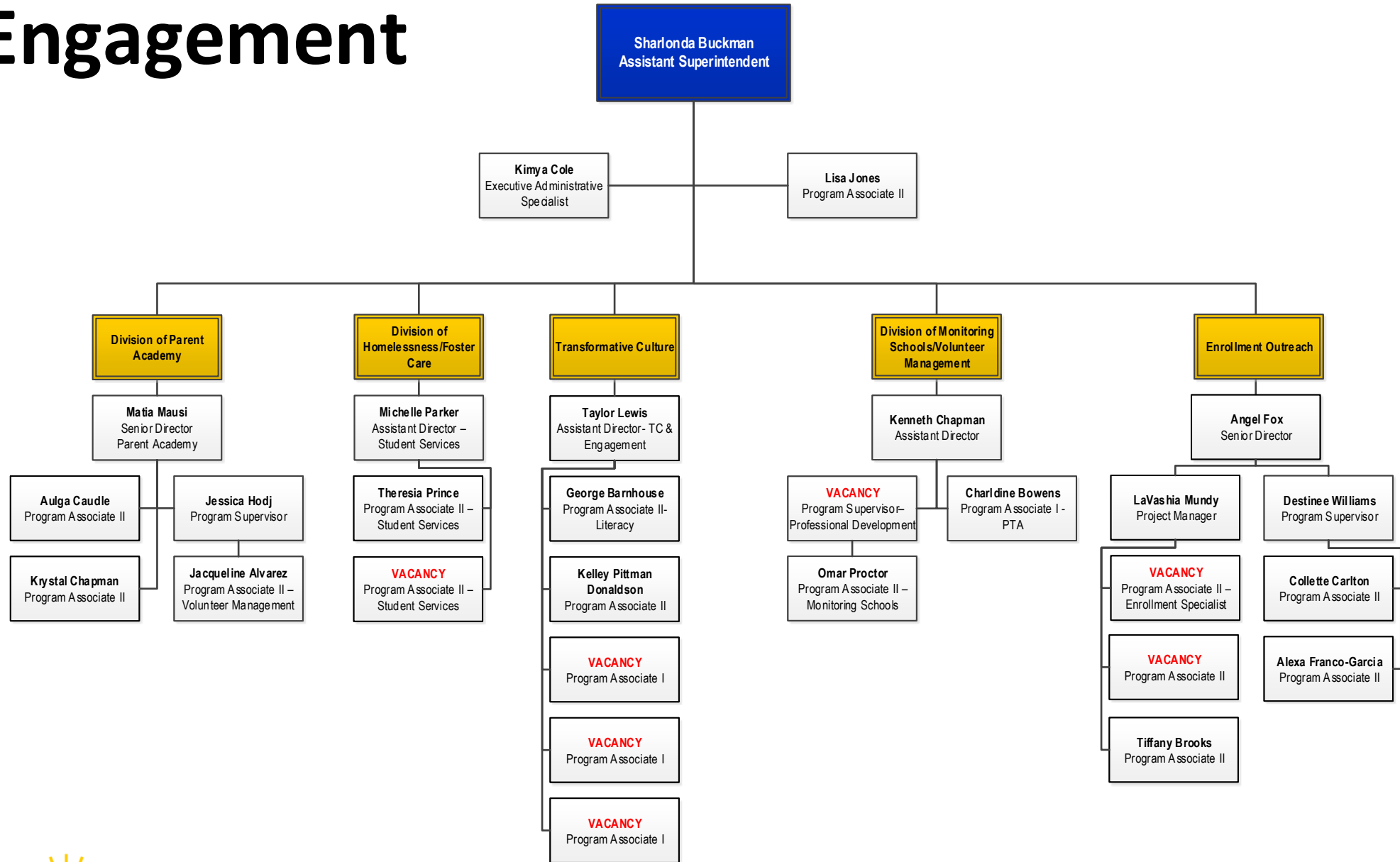
Office of Finance



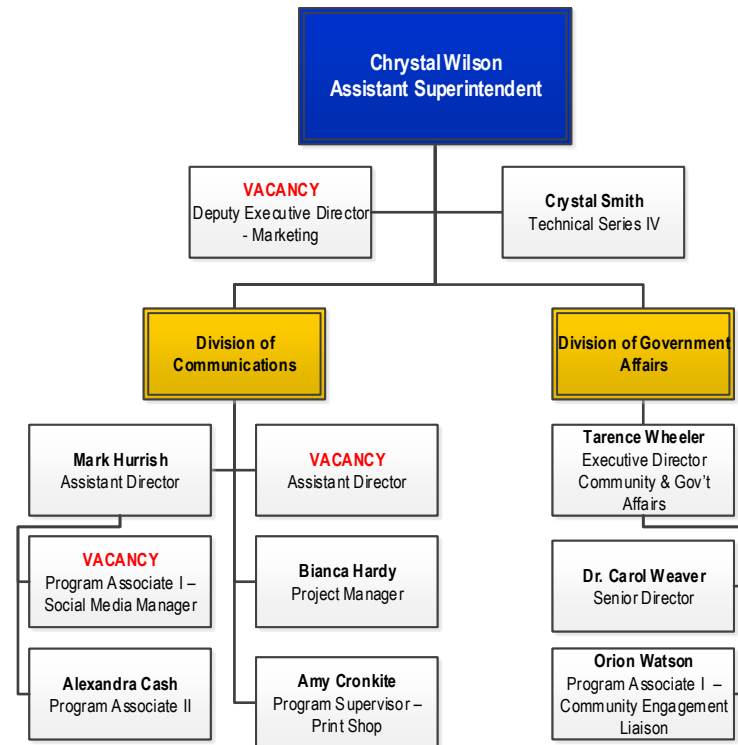
Office of Finance



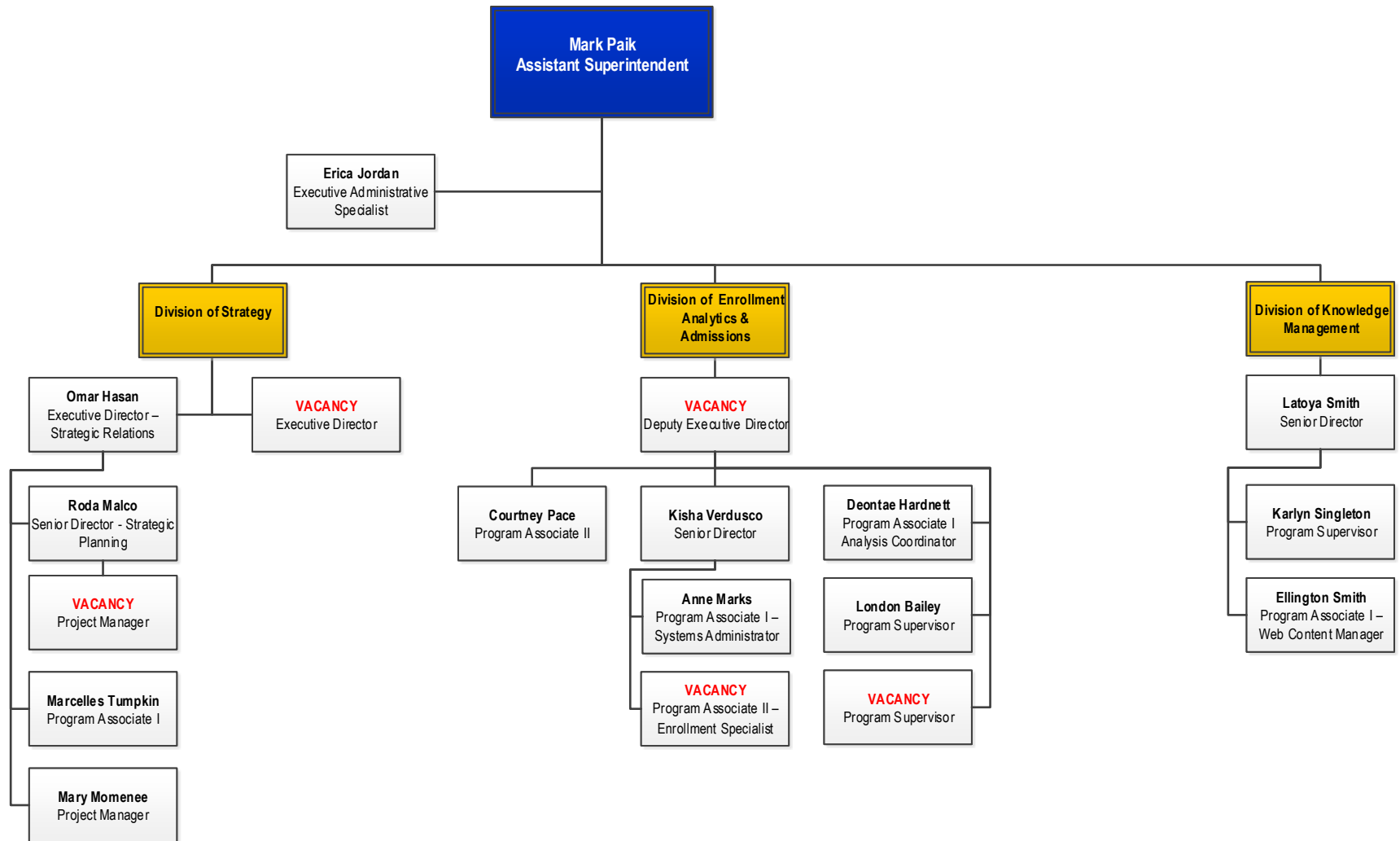
Family & Community Engagement



Office of Communications, Marketing & Government Affairs

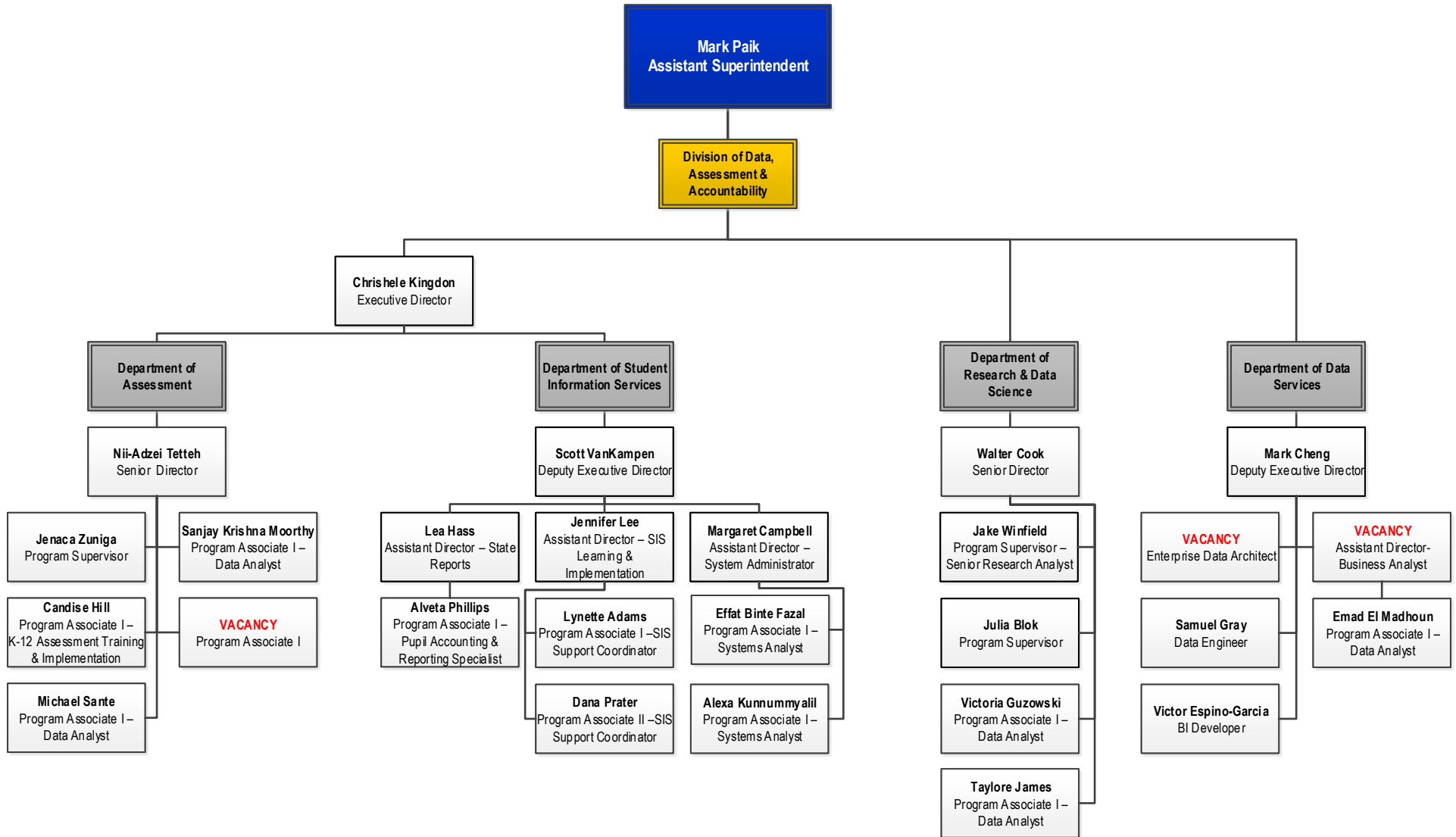


Office of Strategy, Data, and Accountability

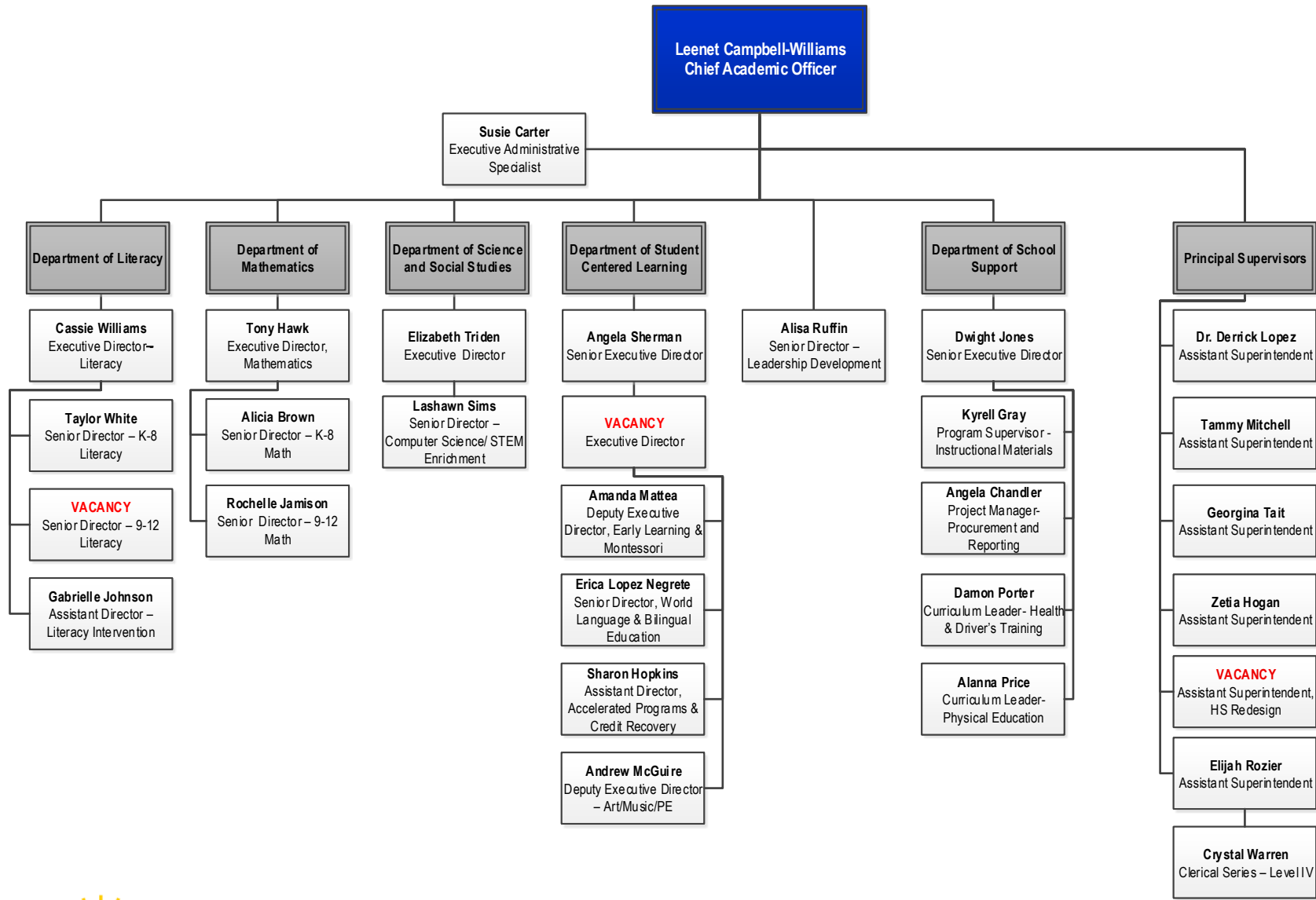


Office of Strategy, Data, and Accountability

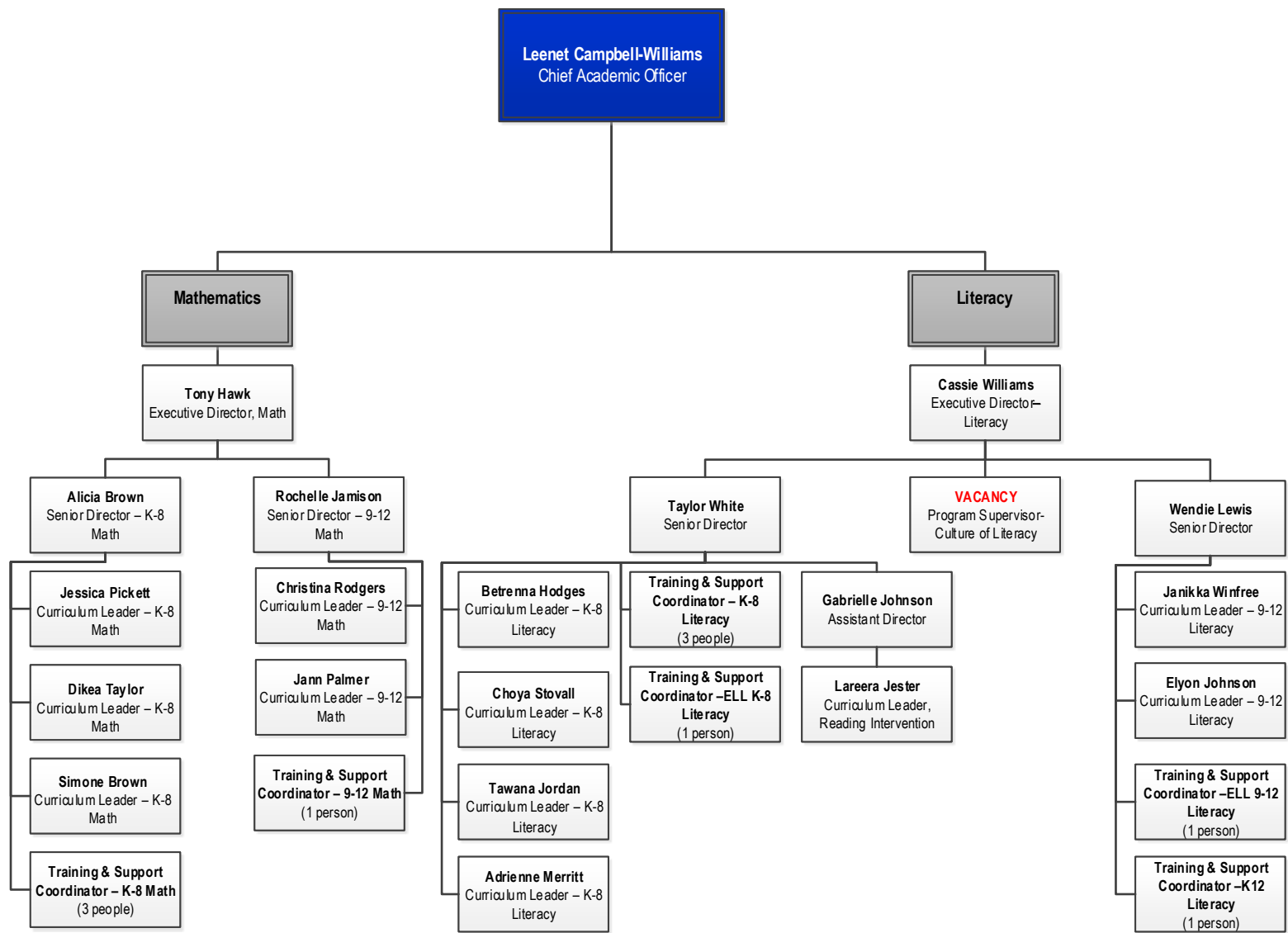
Division of Data, Assessment & Accountability



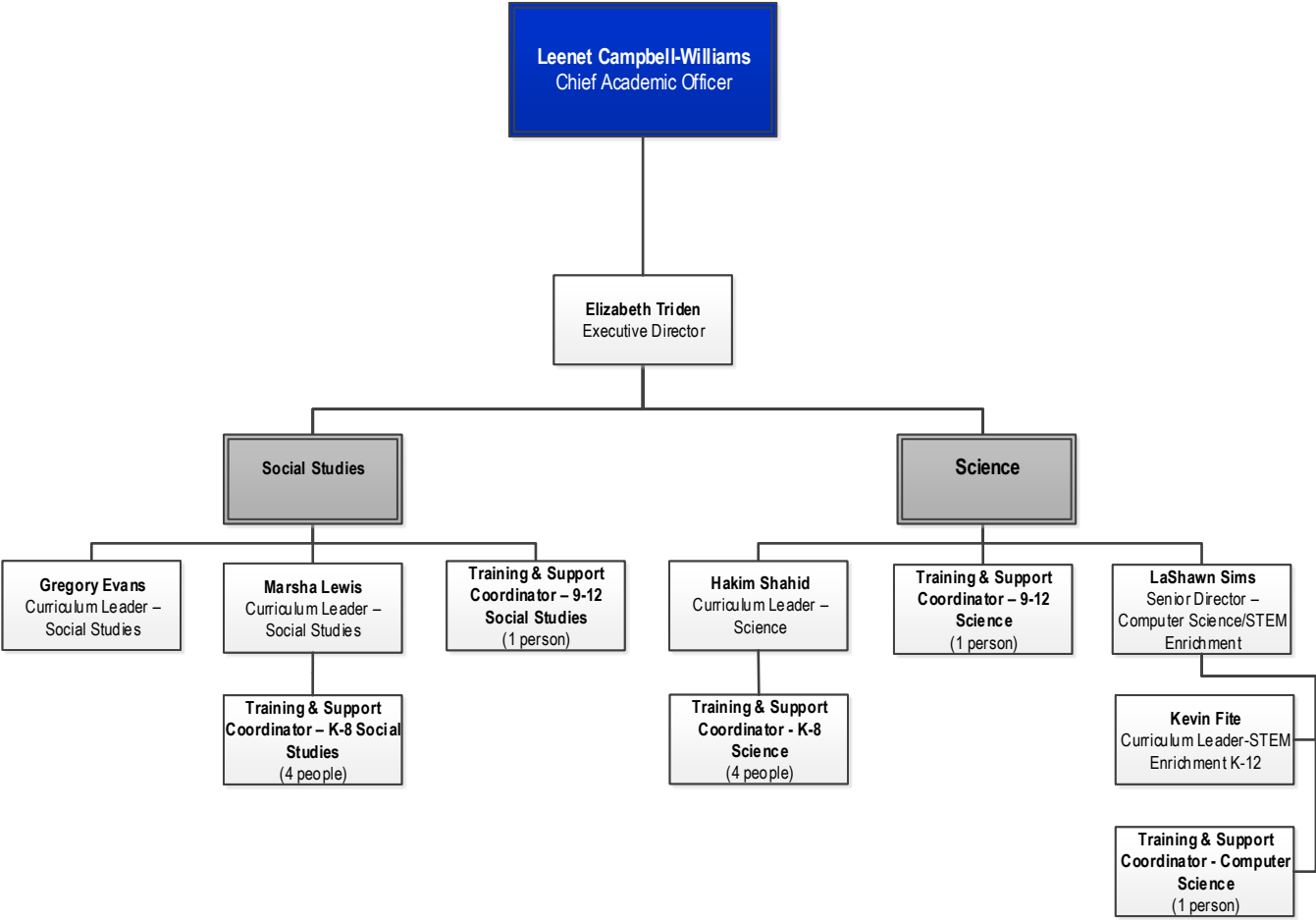
Office of Academics



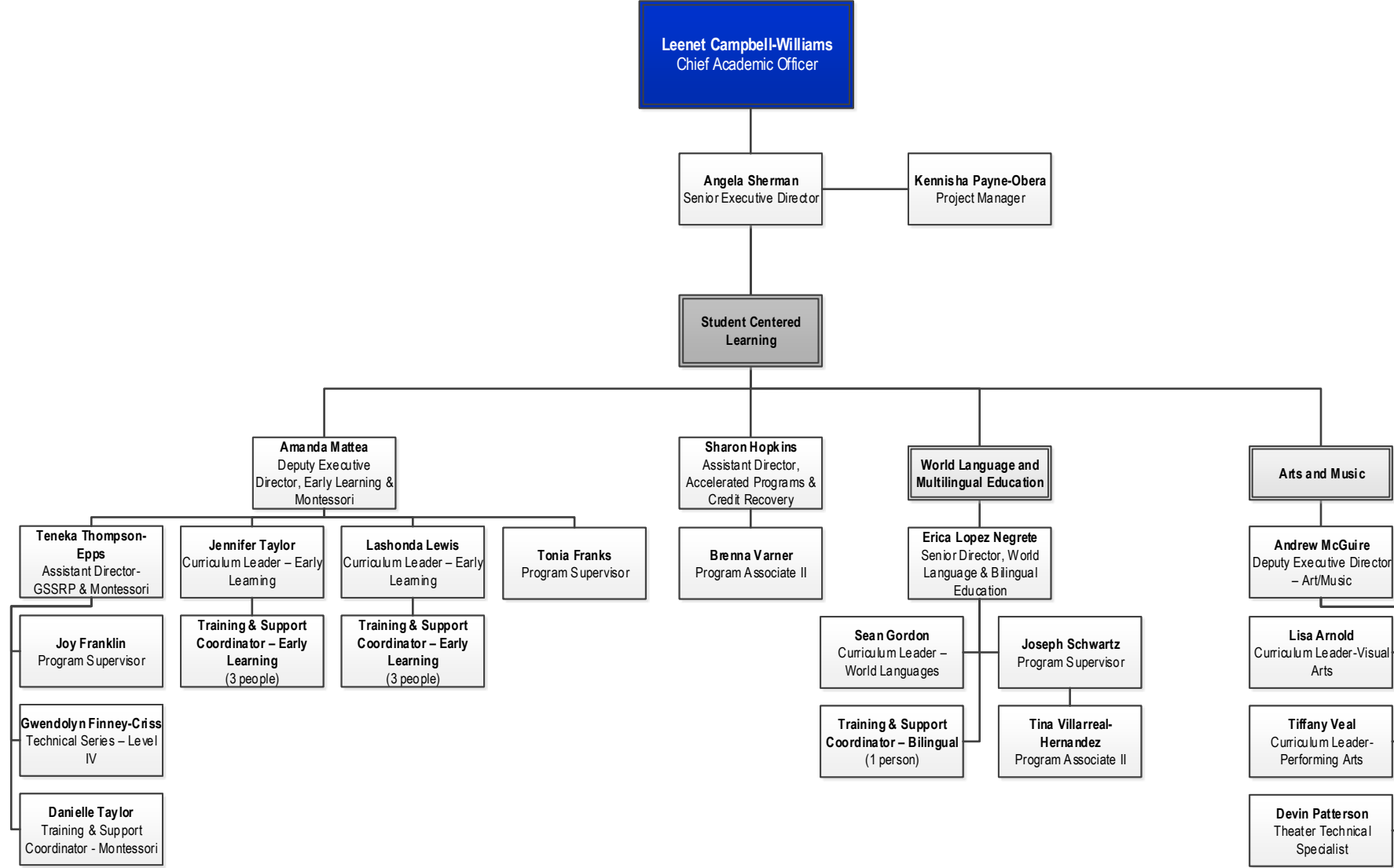
Office of Academics



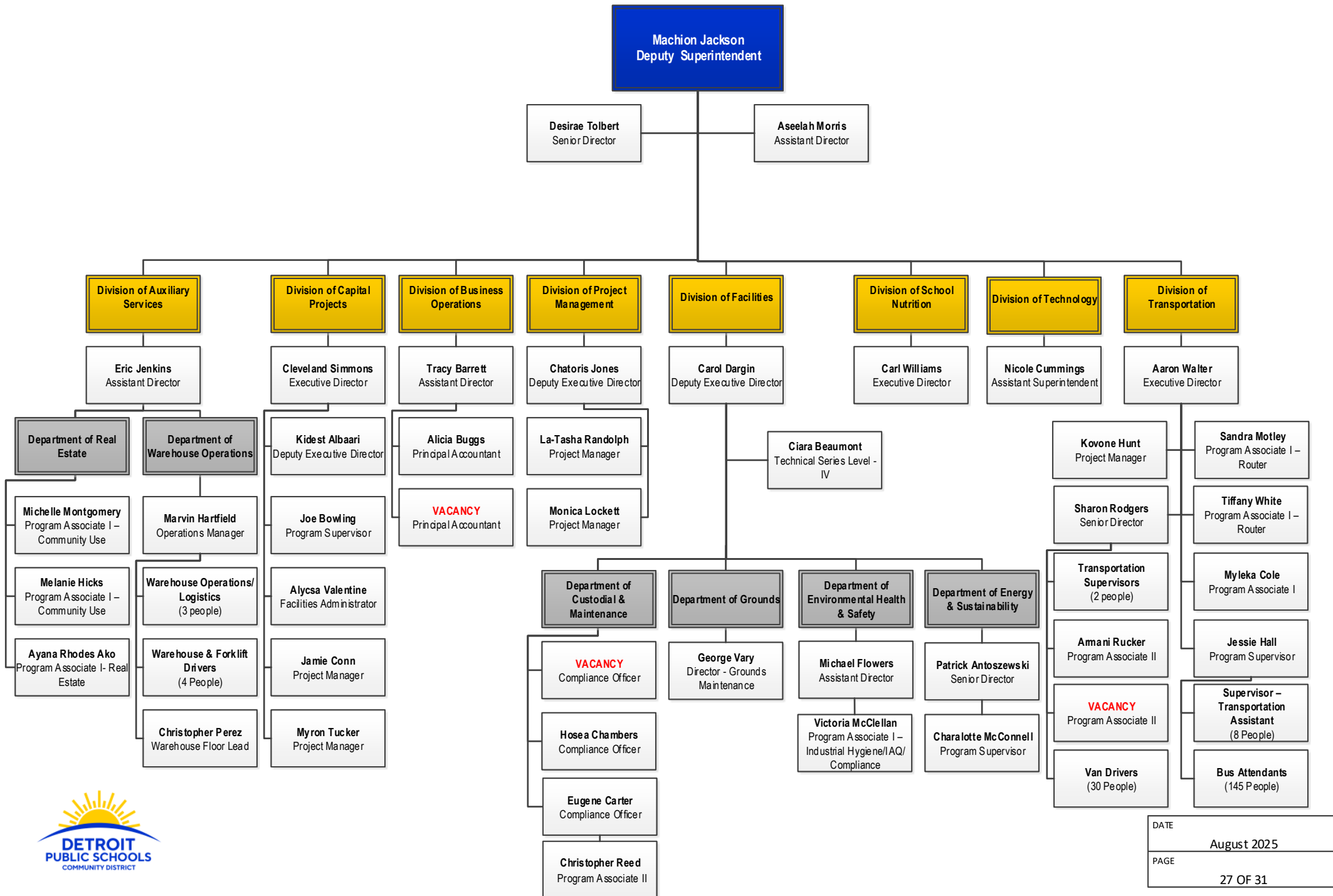
Office of Academics



Office of Academics

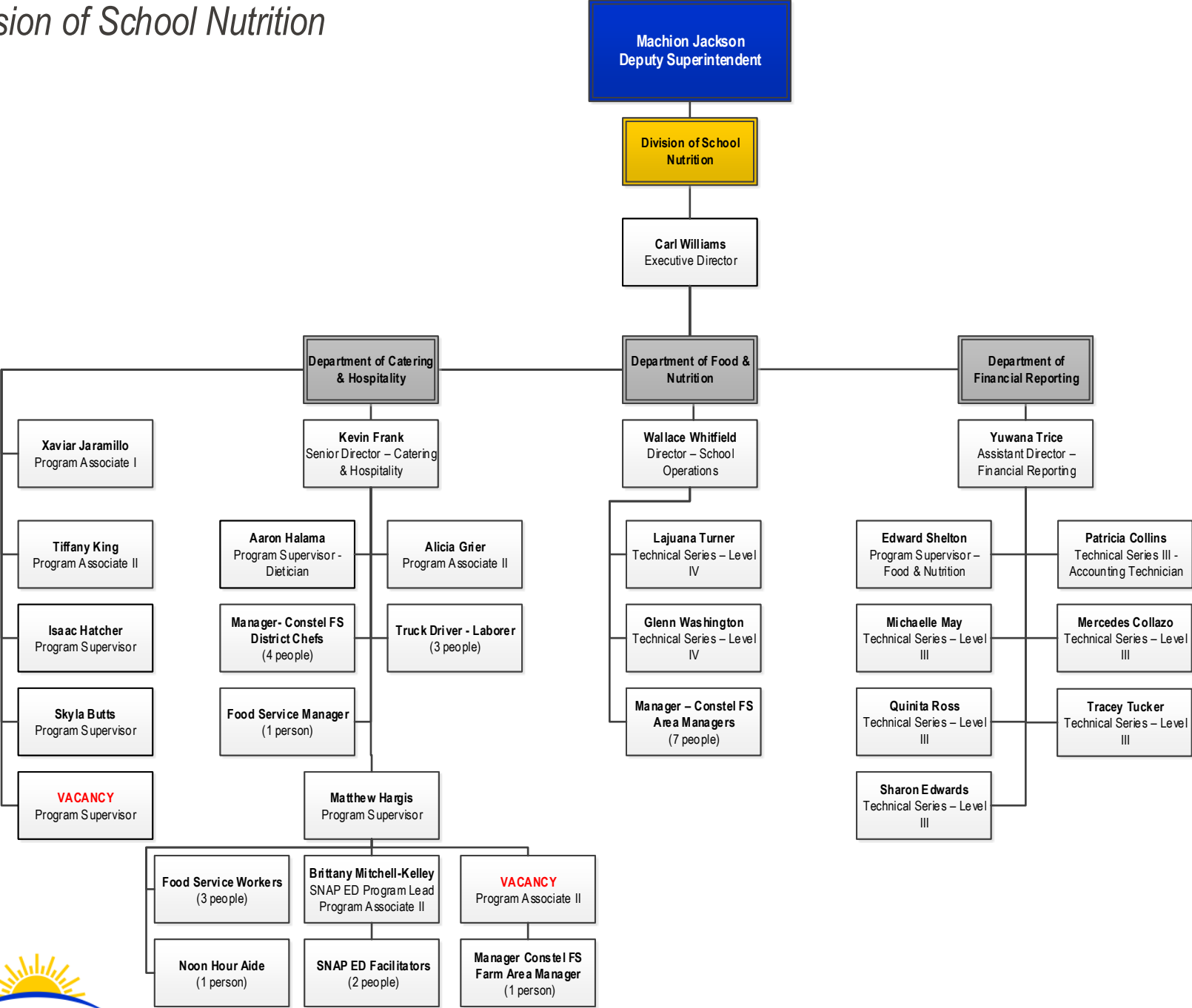


Office of Operations



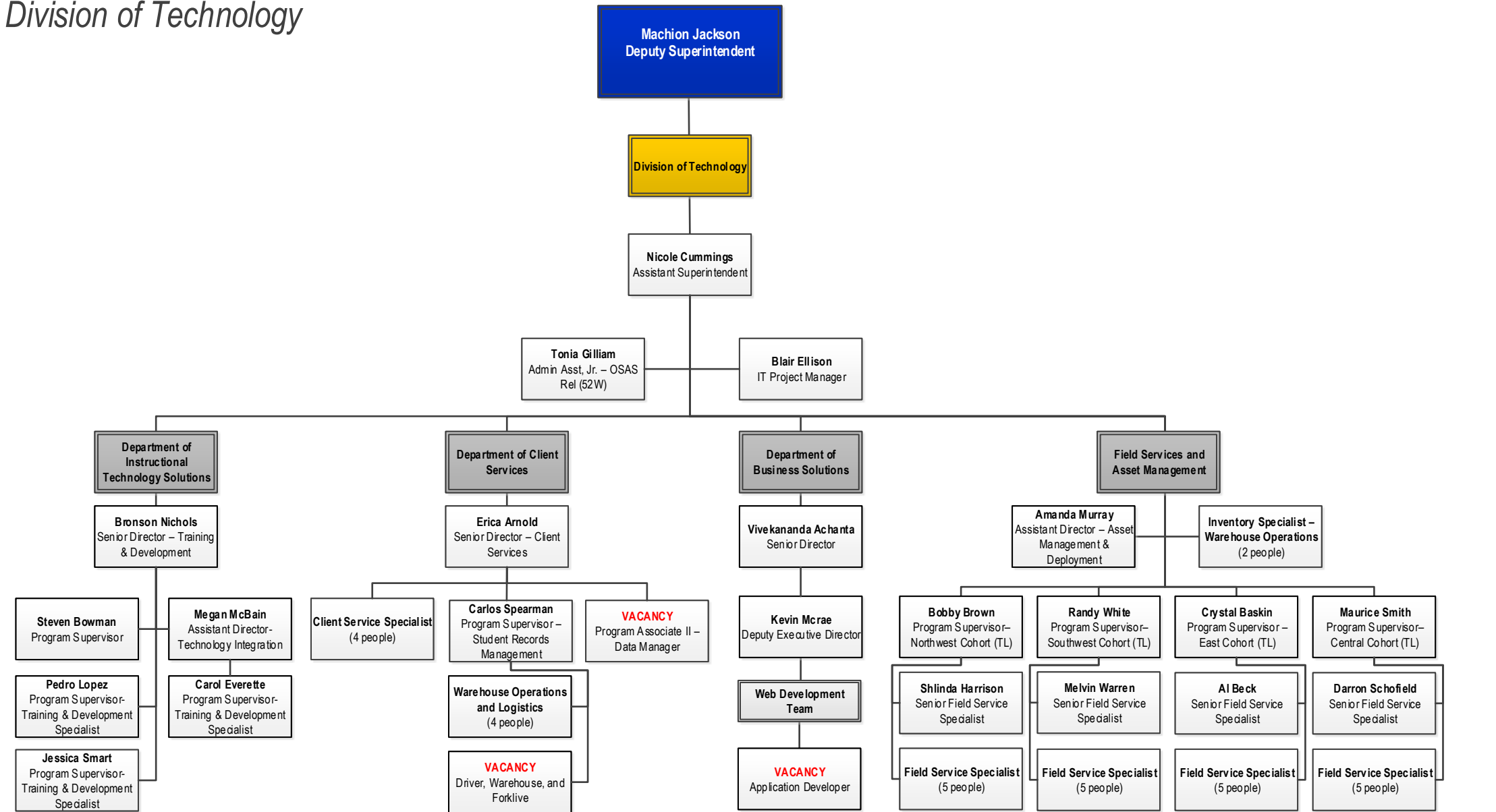
Office of Operations

Division of School Nutrition



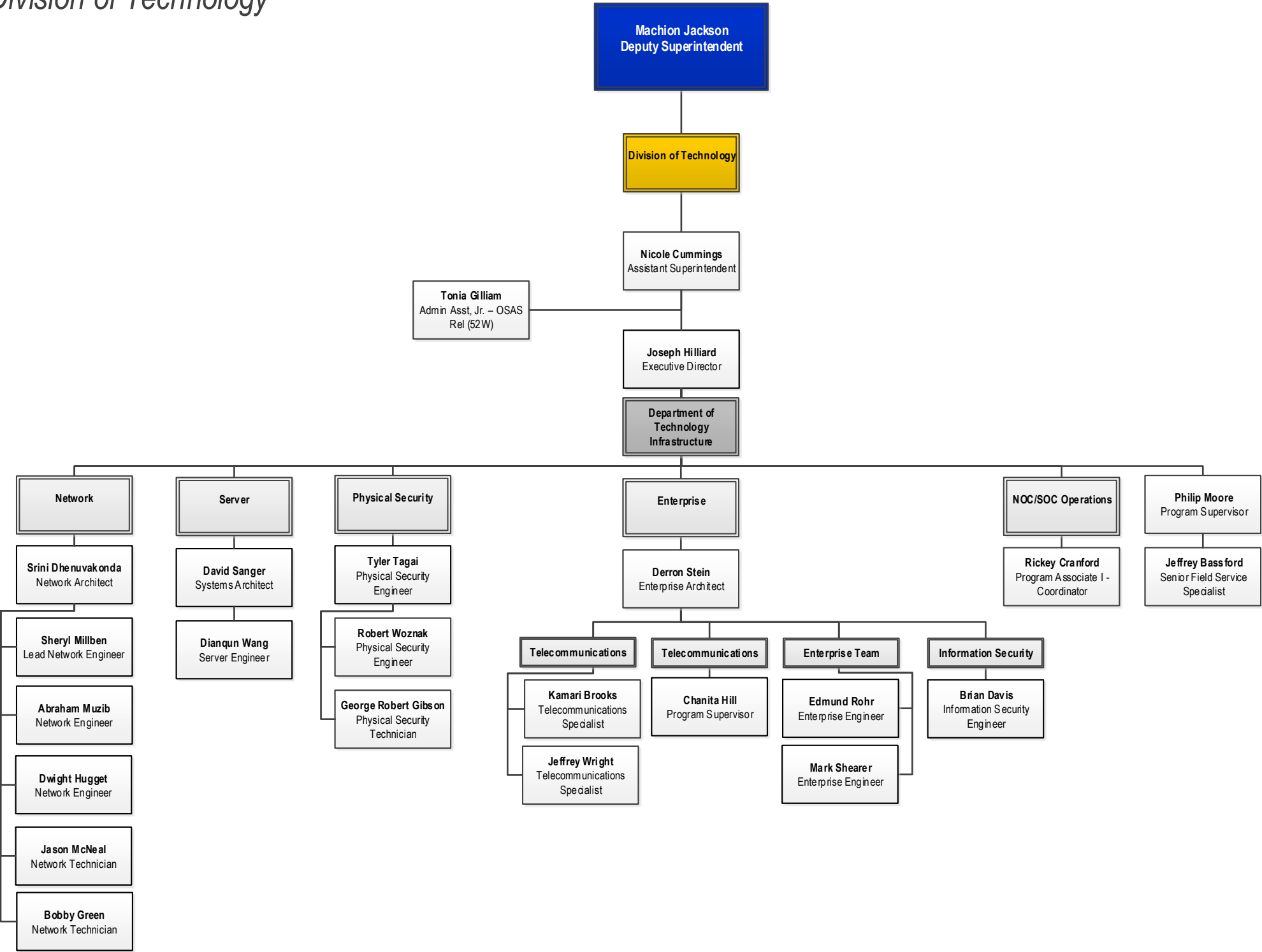
Office of Operations

Division of Technology



Office of Operations

Division of Technology



Office of Human Resources

